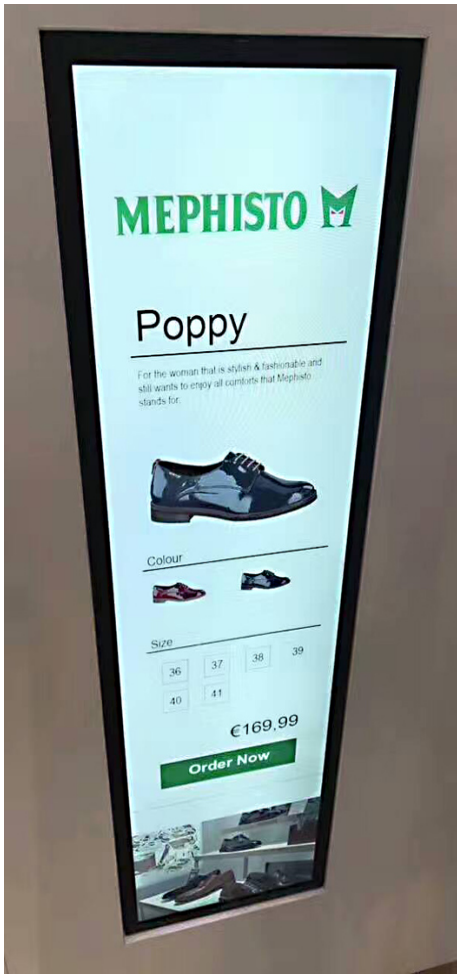


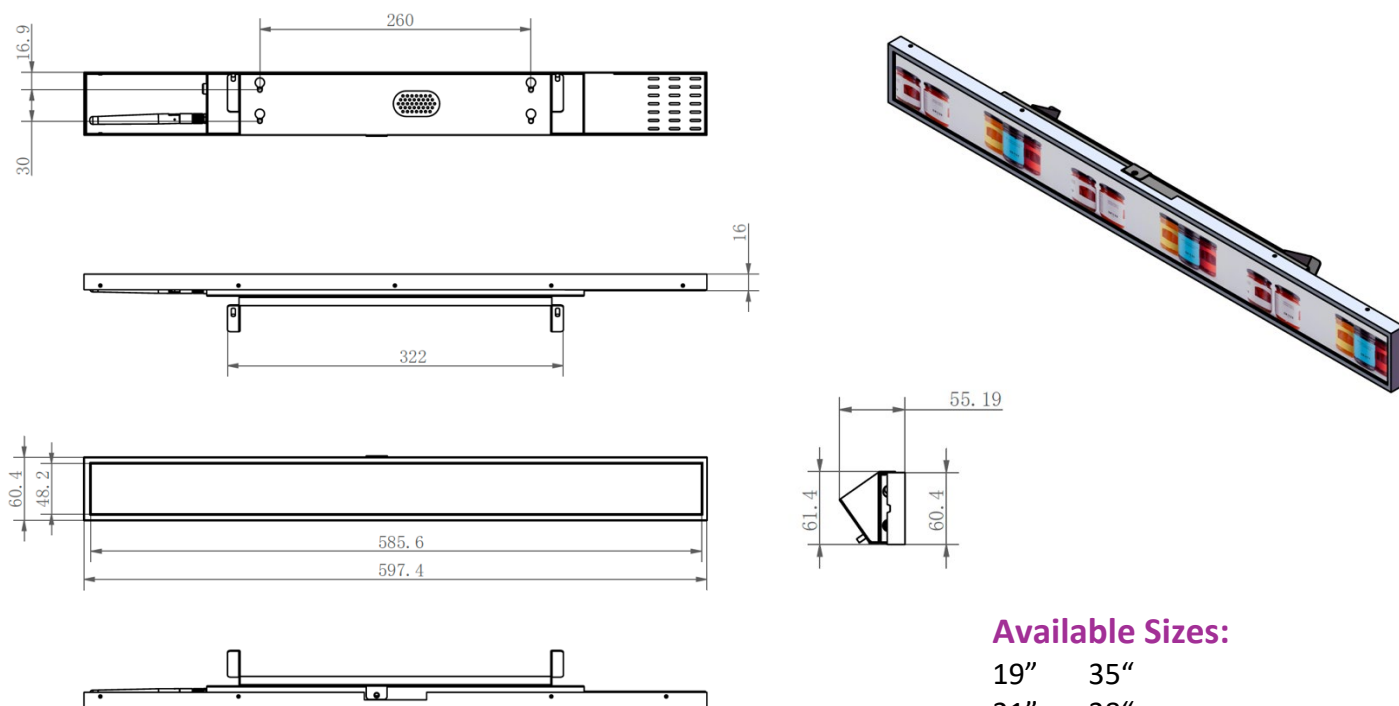


- Android
- High Brightness
- HD Display
- Auto Turn on/ off
- USB/SD Card
- WIFI
- LAN
- Remotely control advertising content



We provide different LED backlights with luminance ranging from 300cd to 1500cd ensure readability, high contrast and high life-time for indoor and for outdoor applications.

Our self-designed controllers support data streaming at full HD display resolutions and low power consumption and we are able to provide customized solutions which combine elegant design and robust mechanical construction specifically tailored for any environments.



Available Sizes:

19"	35"
21"	38"
23"	43"
24"	47"
28"	48"
29"	88"

More sizes customizable

Possible usage:

Reliably and professionally made, this stretched lcd bar is the ideal digital point for the usage in:

- Retail Business: department store, supermarket, hotel, restaurant, travel agency, pharmacy, hairdressers
- Financial Business: retail bank, currency exchange center, loan companies
- Public Services: hospitals, schools, post office, libraries
- Public Places: airport, museum, stadium, car rental
- Real Estate: foyer, show rooms, office
- Entertainment: cinema, gym, hotel, nightclub, bar, theatre

Our advantages:

- Variety of sizes and display ratios
- High quality display with literally no defect
- Screen protection and anti-glare glass optional
- Metal shell with heat dissipation design
- Digital signage player connected or built-in
- 50,000 hours of service time guaranteed
- Large inventory, significant price advantage

Wide range of Stretched Bar LCD



Can also be Customized

SRK-BAR19WR

Size 19 inch
L 476.6mm x H 89.4mm, 1920x360, 300cd

SRK-BAR21WR

Size 21 inch
L 529.4mm x H 36.4mm, 1920x132, 300cd

SRK-BAR23WR

Size 23 inch
L 585.6mm x H 48.2mm, 1920x158, 400cd

SRK-BAR24WR

Size 24 inch
L 597.7mm x H 112.1mm, 1920x360, 300cd

SRK-BAR28WR

Size 28 inch
L 699.8mm x H 131.2mm, 1920x360, 700cd

SRK-BAR29WR

Size 29 inch
L 698.4mm x H 196.4mm, 1920x540, 500cd

SRK-BAR35WR

Size 35 inch
L 879.6mm x H 48.4mm, 2880x158, 500cd

SRK-BAR38WR

Size 38 inch
L 930.2mm x H 276.1mm, 1920x570, 1000cd

SRK-BAR43WR

Size 43 inch
L 1074mm x H 198mm, 1920x360, 700cd

SRK-BAR47WR

Size 47 inch
L 1196.1mm x H 49.8mm, 3840x160, 500cd

SRK-BAR48WR

Size 48 inch
L 1194mm x H 223.8mm, 3840x720, 1000cd

SRK-BAR88WR

Size 88 inch
L 2148.4mm x H 598.3mm, 3840x1080, 700cd

FEATURES: Android Version with SMIL App



SMIL APP

Run SIRKOM SMIL application automatically, realizing its full potential or use your own CMS-software.



Auto Connect

Get registered and connected to SIRKOM server automatically, staying connected after updating



Network Options

Connect to SIRKOM server via Ethernet, Wi-Fi or 3G/4G, offering maximum flexibility



Auto Play

Play immediately once powered on, saving the trouble to manually open the switch and wait



Smart Download

Download content within preset time only and download continuously from breakpoint



Smooth Playback

No black screen switching between programs, continuing the playback after an inserted program



1080p Display

Display in 1080p 60Hz full HD resolution on screens of all sizes



H.265 Video

Play videos encoded with H.265 to get better quality and memory saving



Digital Sound

Add audio files as background music and get stereo surround sound



Startup Screen

Make your logo image or a video clip as the player's startup screen



Password Protection

Set password for player to ensure the security of content and settings



USB Update

Download content to a flash drive or SD card and plug and play, or directly play files from USB



Screens Compatible

Easily connected with screens of different sizes, orientations and resolutions for synchronization of multiple displays



Adaptability

Accept 9-18V input, having surge protection, shockproof and cooling design



Eco-Friendly

Maximize the use of recycled materials and have a low power consumption



Retail Solution

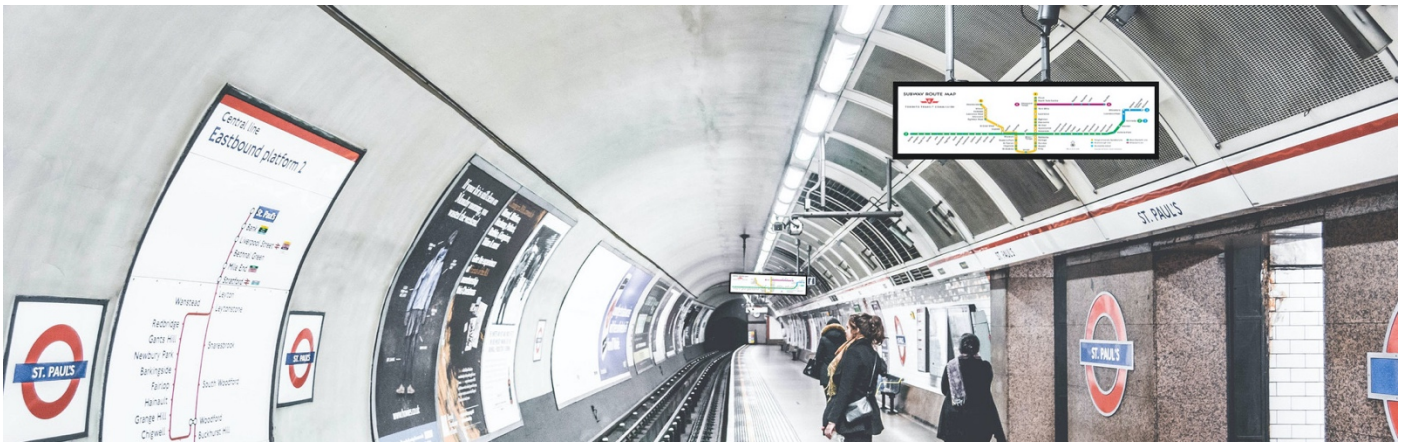
- Draw customers into the retail experience with Ultra Stretch digital signage retail solutions
- Increase sales, operational efficiency and brand awareness
- Designed for displaying information at small or narrow spaces
- Along with screen brightness up to 1000 nits, information and media can remain vivid and sharp even under ambient conditions
- Flawless display in portrait and landscape view
- SIRKOM content management software or your own CMS software

Key Features:

- 1:3, 16:3, 32:9 Extended Wide Format
- Ultra HD Resolution (3,840 x 1,080)
- Brightness: 300-1500 cd/m²
- Interface: HDMI (3), VGA, IR, USB (2)
- Available Sizes: 19", 21", 23", 24", 28", 29", 35", 38", 43", 47", 48", 88"

Stretched display has a wide range of applications. With great space efficiency from its wide screen, you can display information and advertisements at the same time. It is available for a variety of environments, such as transportation, retail solution, vending machine and kiosks, for theatre subtitles and surtitle and restaurant menu boards

Like most digital signage products, the most important thing for a stretched display is the quality of the screen. However, unlike other digital signage products, the quality control of the stretched screen is more difficult and expensive. After years of exploration, SIRKOM have developed a mature stretched display product with high display quality and stable service life, which also has a price advantage over most competitors.



Transportation Solution

Ultra-Wide LCD Displays usually used in transportation such as for bus, subway/metro/train, and metro station and airport, which always requires bar display because of limited space. Ultra Stretch format display, with high brightness, full viewing angle, wide temperature and ruggedness to fit into these diverse environments.

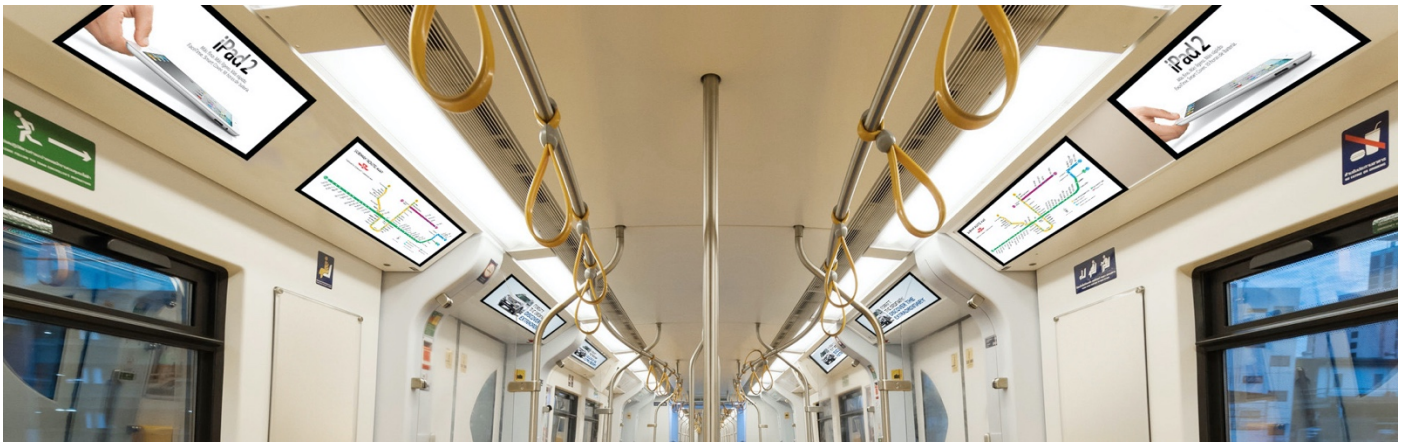
SIRKOM Digital Signage Software can integrate with local PIS (passenger information system) system to provide real time passenger information while advertising.

Key Features:

- 1:3, 16:3, 32:9 Extended Wide Format
- Ultra HD Resolution (3,840 x 1,080)
- Brightness: 300-1500 cd/m2
- Interface: HDMI (3), VGA, IR, USB (2)
- Available Sizes: 19", 21", 23", 24", 28", 29", 35", 38", 43", 47", 48", 88"

Stretched display has a wide range of applications. With great space efficiency from its wide screen, you can display information and advertisements at the same time. It is available for a variety of environments, such as transportation, retail solution, vending machine and kiosks, for theatre subtitles and surtitle and restaurant menu boards

Like most digital signage products, the most important thing for a stretched display is the quality of the screen. However, unlike other digital signage products, the quality control of the stretched screen is more difficult and expensive. After years of exploration, SIRKOM have developed a mature stretched display product with high display quality and stable service life, which also has a price advantage over most competitors.



In-Vehicle Solution

BUS/Metro Display Solution

- Open frame LCD Monitor for flexible fixing in Vehicle
- Durable Metal Housing, Anti-Shock Design to adapt to bus environment
- Wide Range DC Power Input to adapt to bus/metro voltage
- 24/7 Non-stop display service and reliable industrial-class performance
- LAN Daisy Chain optional for synchronization of multiple displays (Unlimited)
- Smart Help for Digital Signage Businesses: SIRKOM Content Management Software

Key Features:

- 1:3, 16:3, 32:9 Extended Wide Format
- Ultra HD Resolution (3,840 x 1,080)
- Brightness: 300-1500 cd/m²
- Interface: HDMI (3), VGA, IR, USB (2)
- Available Sizes: 19", 21", 23", 24", 28", 29", 35", 38", 43", 47", 48", 88"

Stretched display has a wide range of applications. With great space efficiency from its wide screen, you can display information and advertisements at the same time. It is available for a variety of environments, such as transportation, retail solution, vending machine and kiosks, for theatre subtitles and surtitle and restaurant menu boards

Like most digital signage products, the most important thing for a stretched display is the quality of the screen. However, unlike other digital signage products, the quality control of the stretched screen is more difficult and expensive. After years of exploration, SIRKOM have developed a mature stretched display product with high display quality and stable service life, which also has a price advantage over most competitors.



Digital Menu Boards Solution

Digital menu boards allow restaurant operators to:

- Incorporate full-motion video into their menu display
- Instantly update content to account for last-minute product changes
- Make changes and update prices for a single location or multiple locations, from anywhere in the world

QSR Dynamic Menu Boards – Data Integration

Integrated POS digital menu board system deploy price changes to your Digital Menu Boards directly from your Restaurant Point of Sale System!

Stretched display has a wide range of applications. With great space efficiency from its wide screen, you can display information and advertisements at the same time. It is available for a variety of environments, such as transportation, retail solution, vending machine and kiosks, for theatre subtitles and surtitle and restaurant menu boards

Like most digital signage products, the most important thing for a stretched display is the quality of the screen. However, unlike other digital signage products, the quality control of the stretched screen is more difficult and expensive. After years of exploration, SIRKOM have developed a mature stretched display product with high display quality and stable service life, which also has a price advantage over most competitors.



Supermarket Solution

There are some places in supermarket is limited to space, but it is ideal for advertising and promotion if using the UltraWide display in those areas, UltraWide LCD Display is with 1:3, 16:3, 32:9 aspect ratio so it is half or quarter height of the normal LCD display to save the installation place. With 700-1500nit brightness, it can provide better visibility in the supermarket lighting ambient environment.

Key Features:

- 1:3, 16:3, 32:9 Extended Wide Format
- Ultra HD Resolution (3,840 x 1,080)
- Brightness: 300-1500 cd/m²
- Interface: HDMI (3), VGA, IR, USB (2)
- Available Sizes: 19", 21", 23", 24", 28", 29", 35", 38", 43", 47", 48", 88"

Stretched display has a wide range of applications. With great space efficiency from its wide screen, you can display information and advertisements at the same time. It is available for a variety of environments, such as transportation, retail solution, vending machine and kiosks, for theatre subtitles and surtitle and restaurant menu boards

Like most digital signage products, the most important thing for a stretched display is the quality of the screen. However, unlike other digital signage products, the quality control of the stretched screen is more difficult and expensive. After years of exploration, SIRKOM have developed a mature stretched display product with high display quality and stable service life, which also has a price advantage over most competitors.

Smart Digital Shelf Solution



Key Features:

- 1:3, 16:3, 32:9 Extended Wide Format
- Ultra HD Resolution (3,840 x 1,080)
- Brightness: 300-1500 cd/m²
- Interface: HDMI (3), VGA, IR, USB (2)
- Available Sizes: 19", 21", 23", 24", 28", 29", 35", 38", 43", 47", 48", 88"

- SIRKOM Ultra Stretched Displays can be specially designed to fit on the endcap of the shelf for branding or ads promotion as well as on the shelf edge for price tag information display.
- Smart Retail Solution including a ultra-wide stretched LCD Panel, signage media player and content management software. The display solution will show the customers the ultra-wide stretched format media to increase sales.
- Smart Retail Display Solution also can integrate with Camera, Bar code scanner, Card Readers, RFID for different extended purpose of digital signage analytics, product information showing....

Stretched display has a wide range of applications. With great space efficiency from its wide screen, you can display information and advertisements at the same time. It is available for a variety of environments, such as transportation, retail solution, vending machine and kiosks, for theatre subtitles and surtitle and restaurant menu boards

Like most digital signage products, the most important thing for a stretched display is the quality of the screen. However, unlike other digital signage products, the quality control of the stretched screen is more difficult and expensive. After years of exploration, SIRKOM have developed a mature stretched display product with high display quality and stable service life, which also has a price advantage over most competitors.